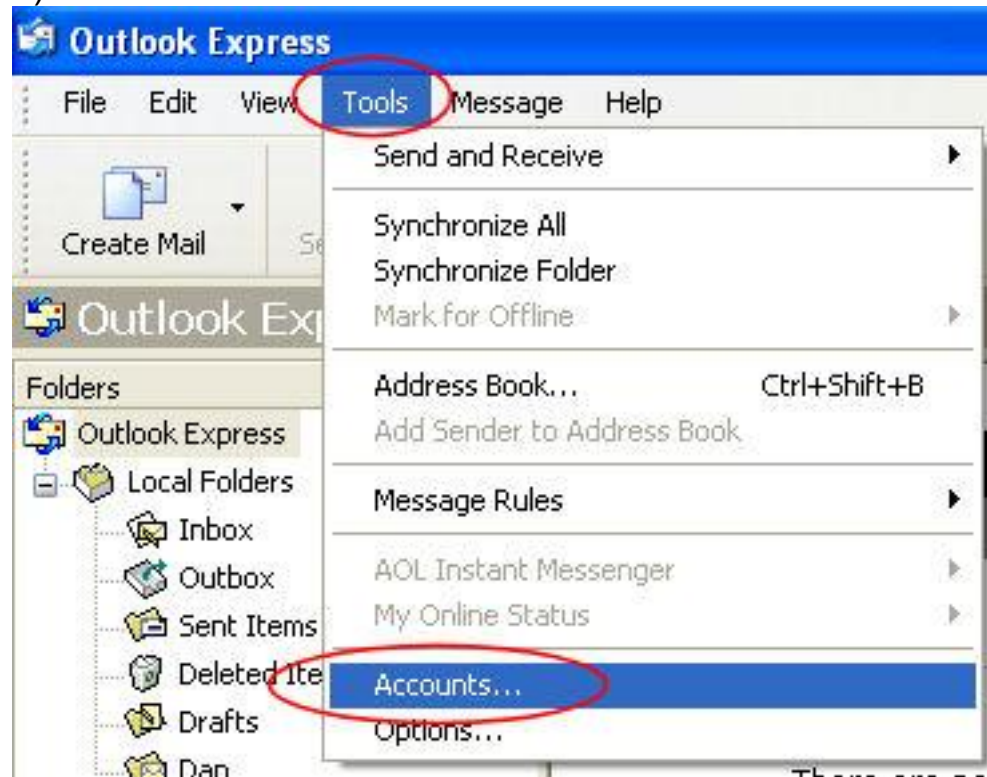
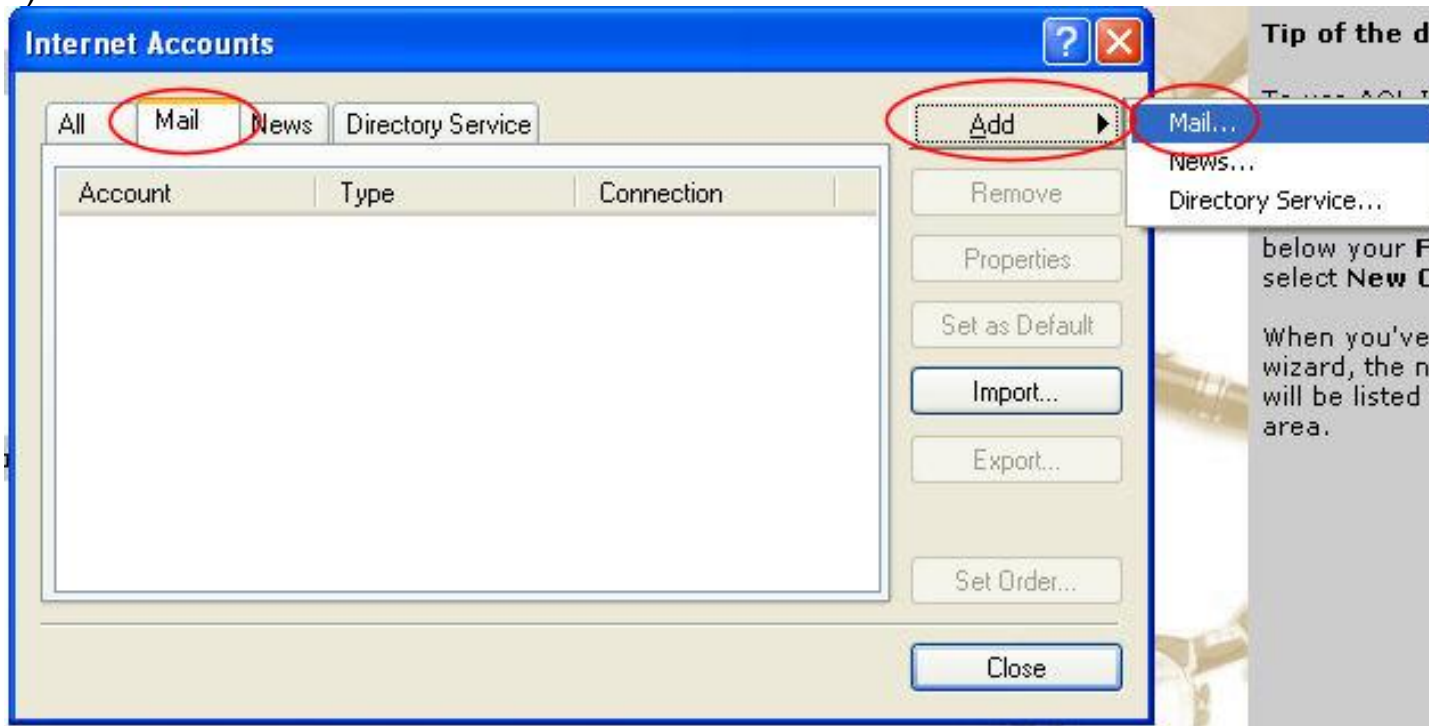


Email Documentation- Outlook Express

1) Click on 'tools and 'accounts'.



2) Click on 'Add' and 'mail'.



3) Enter email address, click 'next'.

Internet Connection Wizard

Internet E-mail Address

Your e-mail address is the address other people use to send e-mail messages to you.

E-mail address:

For example: someone@microsoft.com

< Back **Next >** Cancel

4) Enter mail server info: Incoming mail server: 'pop.accountsupport.com' Outgoing mail server: 'smtp.accountsupport.com' Click 'next'

Internet Connection Wizard

E-mail Server Names

My incoming mail server is a server.

Incoming mail (POP3, IMAP or HTTP) server:

An SMTP server is the server that is used for your outgoing e-mail.

Outgoing mail (SMTP) server:

< Back **Next >** Cancel

5) Enter your full email address, including domain. Enter the password to the email account and click 'next'.

Internet Connection Wizard

Internet Mail Logon

Type the account name and password your Internet service provider has given you.

Account name:

Password:

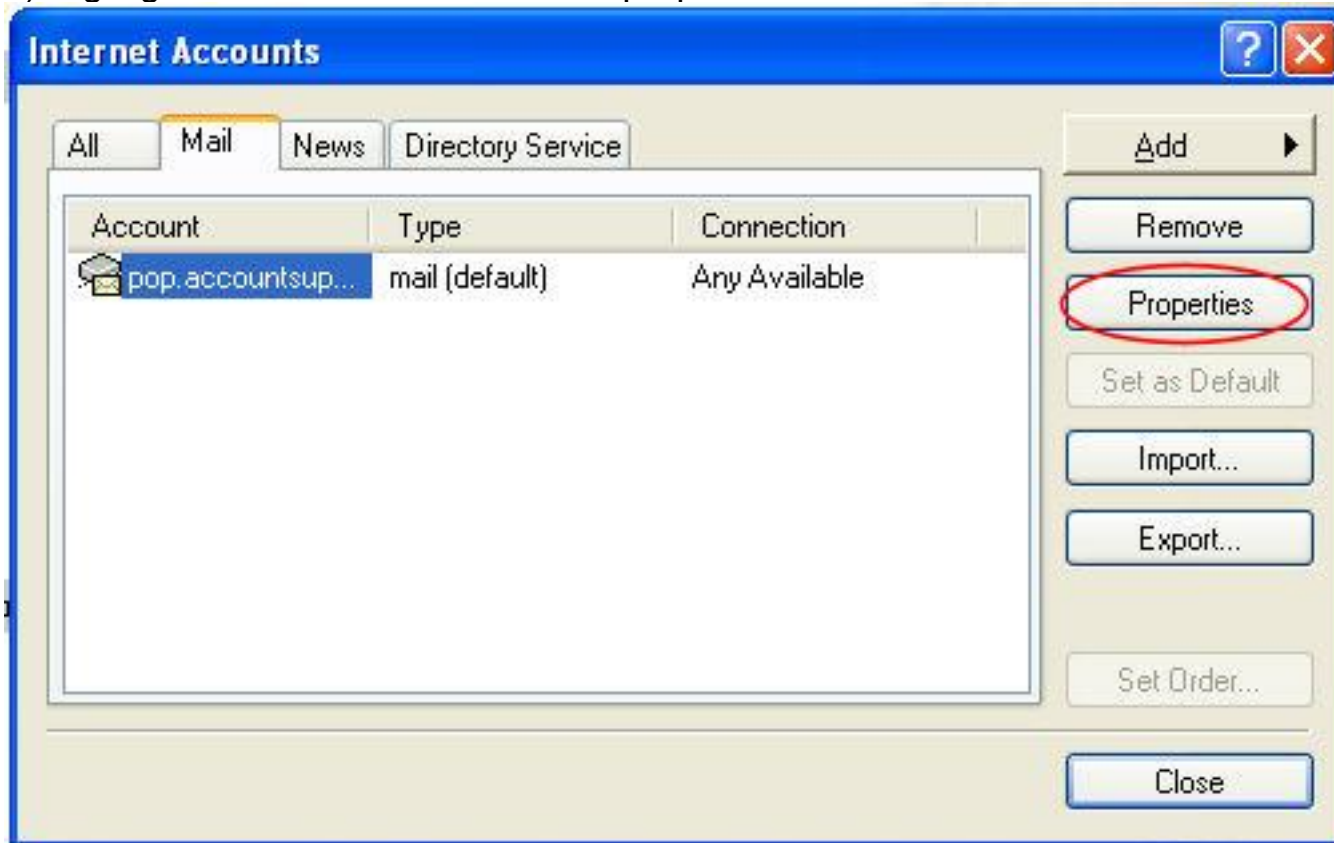
Remember password

If your Internet service provider requires you to use Secure Password Authentication (SPA) to access your mail account, select the 'Log On Using Secure Password Authentication (SPA)' check box.

Log on using Secure Password Authentication (SPA)

< Back **Next >** Cancel

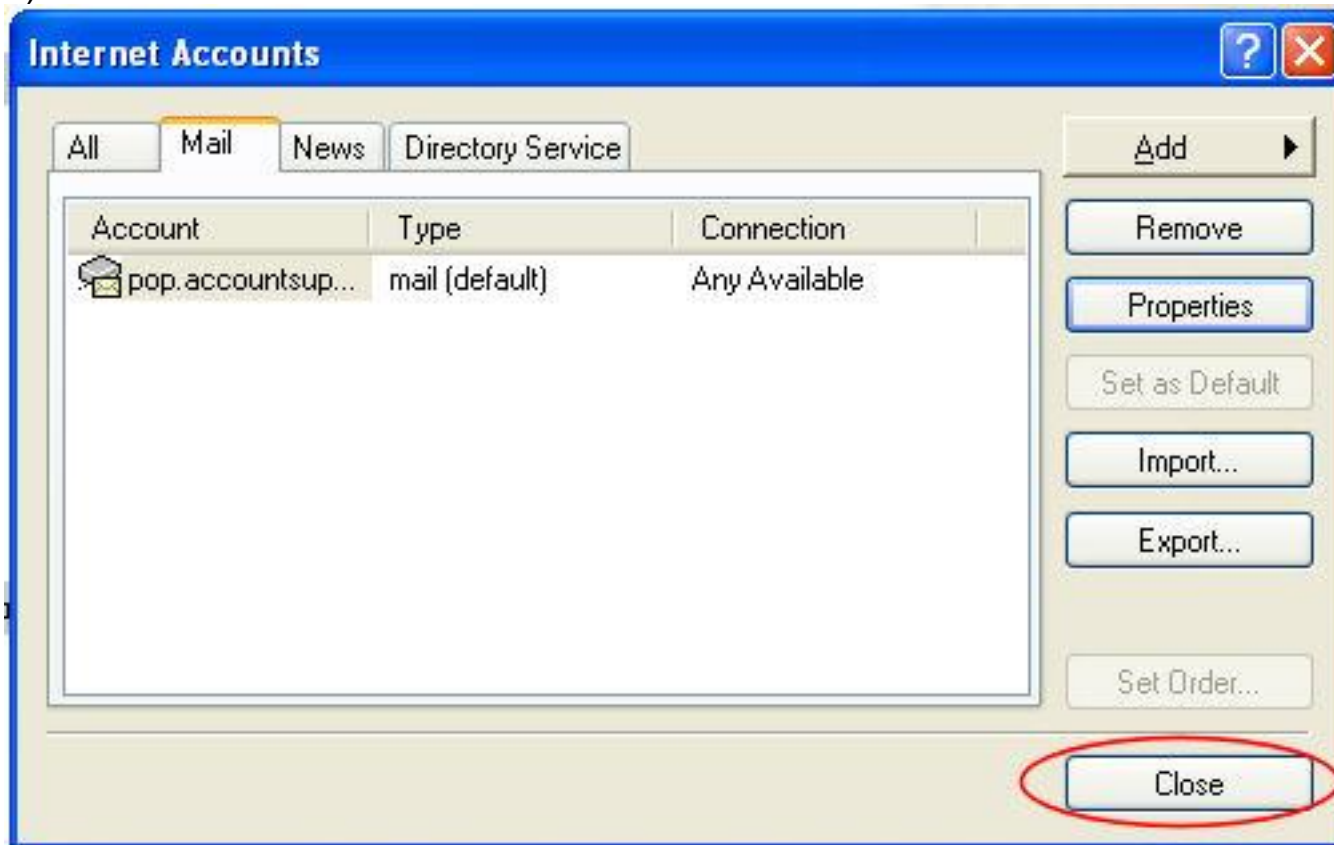
6) Highlight the account and click on 'properties'.



7) Click on the Servers tab. Click the box at the very bottom under outgoing mail server, which says that my outgoing mail server needs authentication. Click OK.



8) Click Close.



9) Click on send/receive to get your email.